



St Mary's Church Newsletter

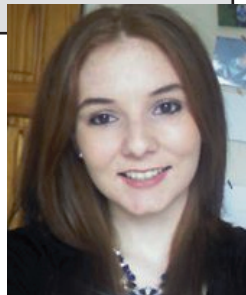
21st June 2015

Third Sunday after Trinity

WELCOME TO ST MARY'S

- Refreshments including tea and coffee will be available at the end of the service.
- An induction loop is available for those who are hard of hearing. Please turn your hearing aid to the 'T' setting.
- Toilets, including disabled and nappy changing facilities are situated at the far end of the church. Follow signs past reception and the main hall.
- There are supervised activities for children of all ages during the service, please follow us out after opening worship. Parents are welcome to leave their children or stay with them.
- Gluten free wafers are available for communion. Please ask a steward or member of the clergy.

A special welcome to Helen Cuthbert as she is baptised this morning and to her family and friends.



10.30 HOLY COMMUNION

Lead and baptise..... Revd Karen Cribb
Celebrant/Preacher..... Revd Julian Sullivan
Readings..... Kate K
Intercessions..... Sam D
Stewards..... Margaret A & Raman
Communion Assistants....Andy & Elaine C
Music.....Steve, Veronica, Rachel,
.....David

COLLECT FOR TRINITY 3

*God our saviour,
look on this wounded world
in pity and in power;
hold us fast to your promises of peace*

*won for us by your Son,
our Saviour Jesus Christ.*

TODAY IS POVERTY SUNDAY



Poverty Sunday is a national initiative encouraging local churches and community groups to reflect, raise funds and respond to issues of poverty affecting communities in England.

If you would like to know more or feel able to donate some money please visit www.cuf.org.uk/povertysunday.

We would like to ask you to please bring tins of food like baked beans or dry foods rice/pasta and cereals so that we can donate the food to our local food bank.

LAW OF SUPPLY

*When supply seems to have failed,
You must know that it has not done so.
But you must look around to see what
You can give away. Give away something.*

-The Two Listeners.

THIS WEEK AT ST MARYS

Monday to Thursday 11am-2pm

Cafe open as usual

Wednesday

9.30-11.30am Parent and Toddler Group

3.45pm St Mary's Family Choir. Come for a cuppa, singing starts at 4-ish. We are learning Fischy Songs this season. It's free and Timebuilders earn a credit for each session attended. All ages welcome from 7 years to 107. Any enquiries phone Yo Tozer-Loft 07925634420.

8pm Life and Faith Group. In the Cafe. See Julian for details.

Please note that Georgia is taking 10 days leave and will be back at work on Wed 24th June

ST MARY'S BIG FETE DAY

Next Saturday 27th June. Next Saturday is St Mary's big fete day - please do come and enjoy the day....and lend a hand if you can. We are helping on the entrances, with the children's activities and also have a church gazebo with opportunities for prayer. If you can help in any way for an hour or so please speak to Karen today - we have a good number of helpers already but need a few more!

CLERGY CONFERENCE

Karen and Julian have been enthusing about this and now a selection of videos from speeches at the conference are now available on our YouTube channel, or from the Diocesan website. Well worth a watch.

TRIP TO CLEETHORPES

On Saturday 12th September St Mary's Light Factory will be going to the seaside and you are invited !

We will be going by train and with the benefit of a group discount and the use of rail cards. we should be able to travel for the return cost of Adult £8.10 Child £2.30

It will be great fun and if we have enough people we can take over a whole carriage !! Our train times will be ; Depart Sheffield Station 8.03am (arrive 10.40am)Return from Cleethorpes 15.30 (arrive 18.08)

Although this a Lightfactory trip we would love any of the wider St Mary's family to join us for the day – the more the betterBuckets and spades optionalfun compulsory. The organisers accept no responsibility for the Cleethorpes weatherbut do bring your sun cream (just in case !)

Please speak to Andy Cribb for more details.

BISHOPSCROFT OPEN DAY

Bishop Steven is holding a Garden Open Day on **28 June**, 2pm – 5pm. All welcome, entrance £2. All proceeds donated to the Cathedral Toddler Group and Archer Project.

TIMEBUILDERS OPPORTUNITIES

Creative Walk and Picnic: Friday June 26th, 12-3pm. Join us on a walk to nearby places; you can sketch, photograph, write, be inspired in any way, or just walk and chat! Bring a packed lunch or order one from St Mary's Reception the day before for 1TimeCredit.

<http://www.timebuilders.org.uk/>

RIDING LIGHTS

Roughshod theatre company - 'Irresistible' at Sheffield Cathedral **18 July, 7.30pm, £7 / £5** (concessions). Box office: 0114 2347575



NEXT WEEK: SUNDAY 28TH JUNE

10.30am Holy Communion

People with jobs: Julian (leader); Karen (celebrant); Giving Team (preach); Michael E (reader); Giles (intercessor); Doreen & Joan (stewards); Kevin & Barbara (communion assistants); Steve, Yo, Jess (music)

4.30 FIX

6.00pm Youth Group

6.30pm Musicians Practice

and learning new music. Please see Kevin Thompson for more information. New members welcome.

...find out more...talk to someone...send some news...

Follow @marys_church on twitter for congregational news, or text follow marys_church to 86444 for news via text message (may be a charge)



Vicar: Revd. Canon Julian Sullivan
jandvsullivan@blueyonder.co.uk
0114 272 4987

stmarys-church.co.uk
Newsletters available online
news to steve@to-lo.co.uk or
0783 5420392

Youth, Student and Families Worker:
georgia.hoskin@stmarys-church.co.uk
0771 323 7027

St Marys facebook group
facebook.com/groups/stmarysbl



Associate Vicar: Revd. Karen Cribb
revkaren@stmarys-church.co.uk
0114 223 0237