

3rd May 2009

4th Sunday After Easter

St. MARY'S

Newsletter



Welcome

Welcome to St Mary's Bramall Lane this morning

Refreshments including tea and coffee will be available at the end of the service.

An induction loop is available for those who are hard of hearing. Please turn your hearing aid to the 'T' setting.

Toilets, including disabled and nappy changing facilities are situated at the west end of the church. Follow signs past reception and the main hall.

This Morning's Worship

10.30am Parish Communion	Readings	Bernard C
	Drinks	Kath
	Communion Assistants	Della & Caroline
	Prayers	Michael K
	Music	Jess, Veronica
	Stewards	John & Margaret I

Life & Faith

Wednesday 6th May at 8.00pm "The Son of Man" The life of Jesus set in modern day South Africa. Please be there for a tea / coffee and a prompt start.

Today Today Iona Teatime Fun



4-6pm here at St Marys in the hall today.

Crafts : Games : Food

Absolutely everybody welcome! Sandwiches, scones with cream and jam, cups of tea, treasure hunt,

lucky bucket, quiz – how can you resist?! Apart from having lots of fun, we are hoping by our donations to raise £100 towards the Iona fund.

May Day Trek - TOMORROW



On the May Day Bank Holiday **Monday 4th May** the Sheffield May Day trek, which raises money for Christian Aid and CAFOD will be over exciting new routes through spectacular countryside on the edge of the Peak District in the Bolsterstone area. (North of Sheffield, near Stocksbridge.)

www.sheffieldmaydaytrek.org.uk

KARIBU!

An African Cultural Evening with performances by groups based in Sheffield

Highfield Trinity Church, Sharrow



We believe in life before death

S2 4UR

Entrance off

Holland Place

(Corner of London Road)

Friday 22nd May,

7pm-9pm

Tickets are free.

Donation taken on the

door for work of Christian Aid. Light

refreshments available

More details: Sam Faulds 07867533981

Help required: We need people to sit on the door



This newsletter is available on the internet at <http://www.stmarys-church.co.uk/>
To submit news or to receive emails when this newsletter is updated, steve tozer-loft 258 4382
steve@tozer-loft.fsnet.co.uk



Vicar: Julian Sullivan 0114 272 4987

- 30 minute shifts from 6pm. Please speak to Yo, if you think you might be able to help.



Christian Aid Week

13-19th May. *Raising awareness and money to relieve poverty. Please support this in prayer and...*

- We are asking who would like to collect door to door this year – we need 15 people to go ahead with the street collection. Join the 300,000 volunteers around the UK, who last year raised £15 million to help Christian Aid in its war on poverty.
- Take up your own £50 challenge – do what you like (within the law!!) to raise the cash. yo will give you a red tin. You have three weeks (26th April - 19th May)
- On **Sunday 17th May**, our young people (or some of them) will be washing cars to raise money for Christian Aid, during the Sunday morning service and APCM.

Time And Space To Wonder @ Wath

Tuesday May 26th - Thursday May 28th for 8 - 11 year olds and young leaders. Come residentially or as a day visitor. Come with your friends and make new ones too!

Pond dipping, Stories, Trail finding, cooking, Bird watching, Crafts, Mini beasting, Games. Cost approximately £40 to stay (10.00 Tuesday - 4.00 Thursday) £5.00 per day (10.00 - 4.00 daily). Yo has more details.

St Vincent's Furniture Store, Sheffield

St Vincent's Furniture store is the only service provider of good quality donated furniture and household goods GIVING IT AWAY to homeless and destitute people in the City of Sheffield, and its based in St Marys Parish. Many of those supported are victims of domestic violence many of whom have babies and young children. Donations of furniture and household goods are welcome.

Contact: St Vincent's Furniture Store, 2584075 or The Basement, St Wilfrid's Centre, 524 Queens Road, Sheffield S2 4DT

Genuine Concern For Africa?

Causes of displacement and the restrictive nature of asylum in the UK.

Thursday 7th May 6-9pm, Arts Tower Lecture Theatre 3, University of Sheffield.

Price: £1 (tickets can be bought on the door or in advance from the Student's Union Box office)

This interdisciplinary conference will accompany refugees on their journey - from their departure to their arrival in the UK. With speakers from a variety of academic backgrounds we will explore the causes for displacement and the reaction to it by the UK as a receiving country.

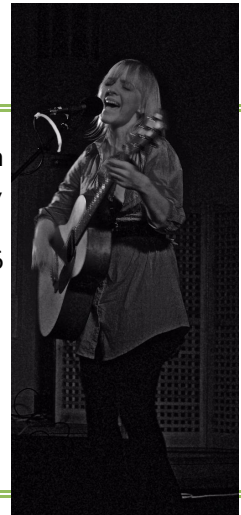
Speakers include Professor Andrew Geddes (Head of the Politics Department, University of Sheffield), Dr Miles Larmer (Lecturer specialising in Africa in the History Department, University of Sheffield), Dr Gina Clayton (Expert in Immigration and Asylum Law) and an asylum seeker from Africa speaking about his/her personal experiences

If anyone wants to bring information, petitions, model letters about their campaign so they can tell people about it after the event, they are very welcome

Phillipa Hannah's New Album

Will be launched on **20th June** - at The Megacentre, Sheffield, S2 5BQ

Tickets available for just £6 from the online shop.



Next Sunday – 10th May

9.30am Holy Communion (BCP) in the Chapel

10.30am Family Service

People with jobs to do next Sunday: Elaine & David (drinks); Kate K(steward);Jon, Bryony, Yo (music)

This newsletter is available on the internet at <http://www.stmarys-church.co.uk/>
To submit news or to receive emails when this newsletter is updated, steve tozer-loft 258 4382
steve@tozer-loft.fsnet.co.uk



Vicar: Julian Sullivan 0114 272 4987